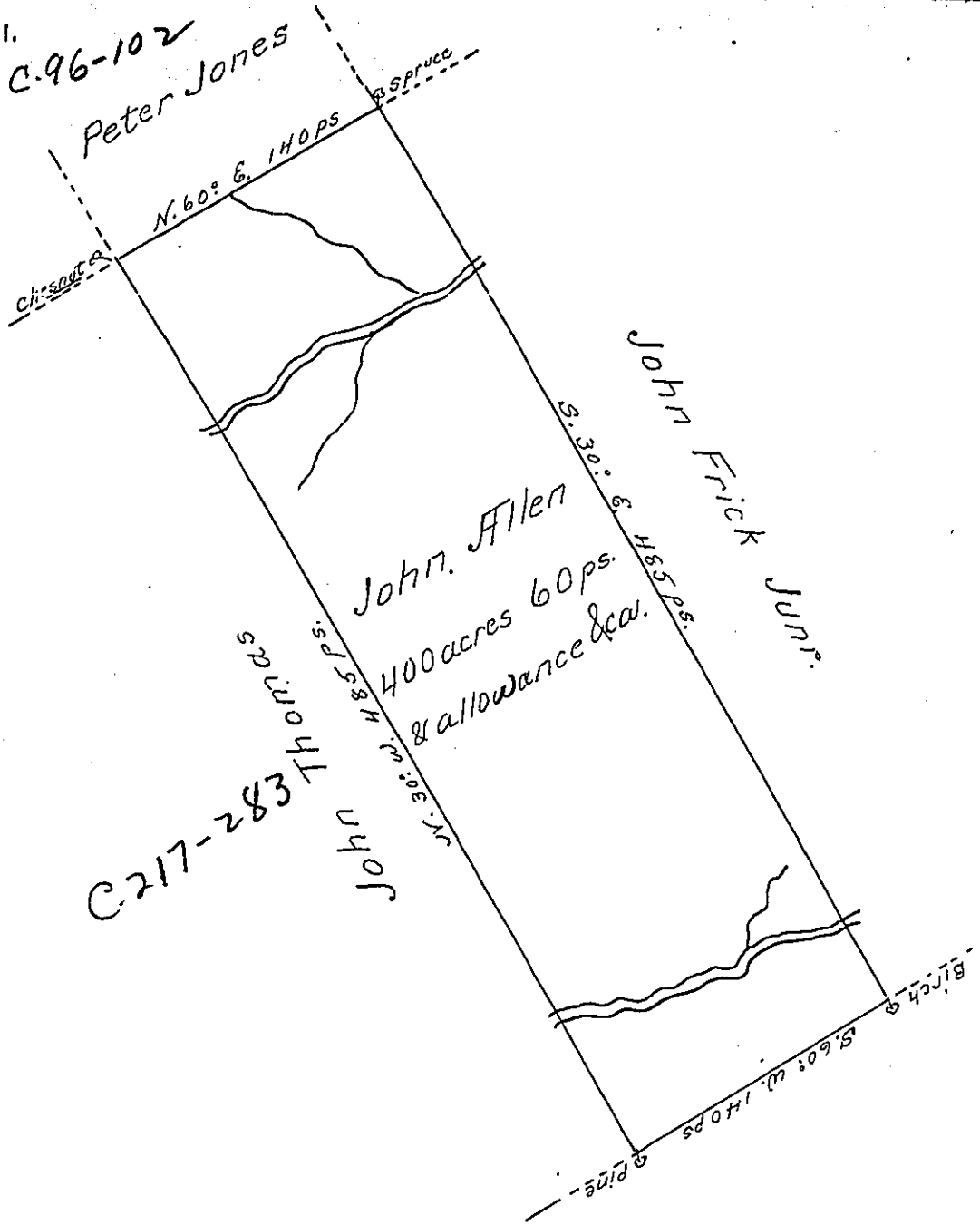


C.96-102



A Draught of a Tract of Land situate in
 Haines or Potters Township, Mifflin or North-
 umberland County, containing four hundred
 acres and sixty perches and the usual allowance
 of six pcent for Roads &ca. adjoining Land of
 John Frick Junr. and others, surveyed ^{the 20th June 1794} for John
 Allen in pursuance of his Warrant, dated at
 Philadelphia March 24th. 1794

pr.
 Tho^s Evans Esq.

T. Daniel Brodhead Esqr. }
 Surveyor General of Pennsylvania }

IN TESTIMONY that the above is a copy of the original remaining on file in
 the Department of Internal Affairs of Pennsylvania, made
 conformably to an Act of Assembly approved the 16th day of
 February, 1833, I have hereunto set my Hand and caused
 the Seal of said Department to be affixed at Harrisburg,
 this third day of June 1902

James W. Pitta
 Secretary of Internal Affairs.